

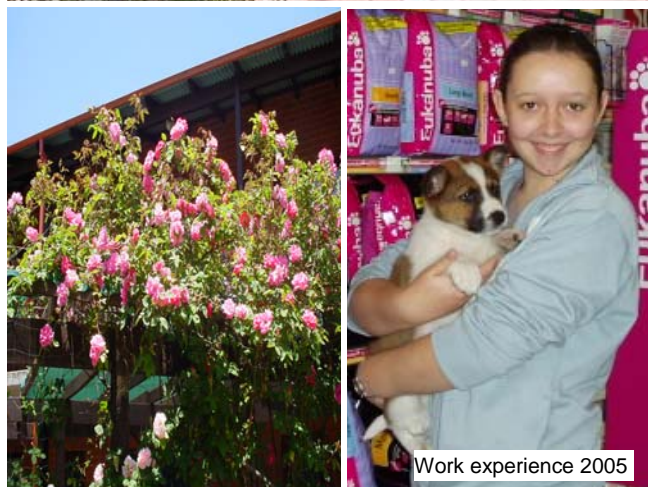
# Lesmurdie

## Senior High School

### Annual Report 2005



Photo courtesy Rock Eisteddfod 2005



Work experience 2005



## FROM THE PRINCIPAL

In 2005 we set out to improve our already high level of student achievement, let me say that we exceeded our high expectations. It is with much pleasure that I present this report as it illustrates; the many achievements of our students, how we compared against other schools and how we have continued to improve.

Our academic results last year were impressive. Most of our leaving students achieved the success they had worked for. Lesmurdie SHS is currently ranked the 5<sup>th</sup> best public school in the state based on our students median TER score. This high result explains why we are also the most successful TEE school, public or private, in our area\* based on median TER score.

With our year 12 non TEE subjects, 75% of our subjects performed above the state average. In our vocational study courses 96% of the year 12's from last year successfully gained employment or further studies.

### Keith Svendsen - Principal

\* Local area; we compared Lesmurdie SHS against all our local high schools, namely; Carmel Adventist, Forrestfield SHS, Lumen Christi, Kalamunda SHS, Kelmescott SHS, Mazenod, Thornlie SHS and St Brigids.

## OUR PROFILE

Lesmurdie SHS serves the surrounding hills from the South of Kalamunda to Carmel and Wattle Grove to Pickering Brook.

Nestled amongst bushland, away from the distractions of shopping centres and traffic, our school is an ideal setting for learning. The grounds and buildings are attractive, well-designed and well-maintained.

Our school promotes quality and excellence within students and prides itself on providing quality education.

## HIGHLIGHTS

### Special Science & Mathematics Programme

Once again in 2005 we offered Year 8 enrolments into our Specialist Science and Maths course. Selection for this course was competitive and highly sought after. 80% of the Year 12's from this programme ranked in the top 15% of TEE students statewide in 2005.



## Dance

A professional look in 2005. Lesmurdie SHS came 2nd position in the state in the Rock Eisteddfod competition.



## Other School highlights

- Excursion to Japan
- School Production - "Into the Woods"
- Grand Final win in the WA Schools Super 8 Cricket
- 4th in Yoh Fest, a statewide drama competition.

## PART OF THE COMMUNITY

Lesmurdie Senior High School was formed as a result of strong lobbying by our local community 25 years ago. These strong community bonds have not been forgotten.

We encourage our students to have a co-operative spirit and we promote the value of contributing to society.

Here are some of the ways our local community helps our school;

- Parents who value education and take an interest in the development of their sons and daughters.
- P&C Association actively supporting the school with advice, excellent canteen management and generous financial support.
- School Council drawing on the guidance of community members, parents, staff and students.
- Community library at our school open after school hours.
- Volunteers mentoring our students.
- Volunteers giving their time in the school canteen.
- Local businesses continually supporting our work training and offering jobs to students.
- Local Primary schools co-operating with our school to co-ordinate the year 7's with our high school induction.
- Community based programmes (such as "Jobs Pathways") ensuring maximum support is available to students giving more options for our students.

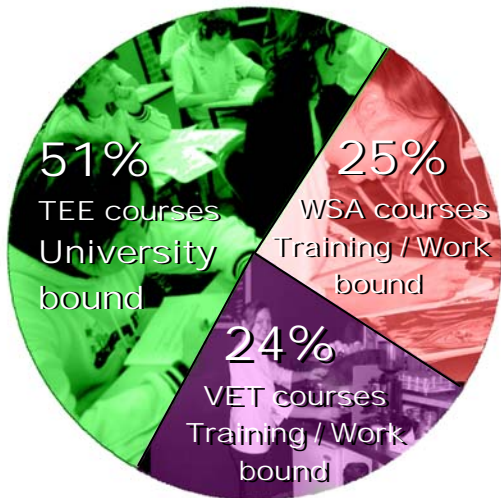


We are proud that our students choose to help communities and choose to become a useful part of our community. Photographed: Landcare, working in the community, giving aid in Tsunami ravaged Sri Lanka.

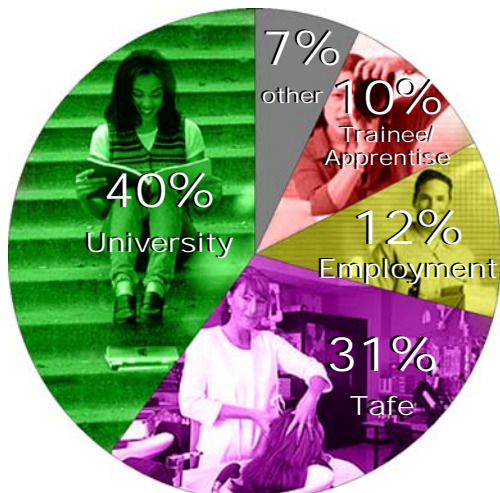
## ACADEMIC RESULTS

Our Year 12 students were in three groups in 2005. 98% of our Year 12's graduated.

### YEAR 12 COURSES STUDIED IN 2005



### WHERE OUR CLASS OF 2005 ARE NOW



Pleasingly unemployment made up only 1.4% of the 7% "other" slice in the above pie graph. Most of our leaving year 12's were successful. 93% obtained either entry into University, Tafe, employment, apprenticeship or traineeship.

**Our WSA students** or non-TEE students receive grades for their subjects. WSA students are not ranked statewide and they are not given an overall score. For this reason when monitoring our school's performance we look at each subject and compare statistics on grades awarded. The number of A grades given for each WSA subject can be compared with state averages.

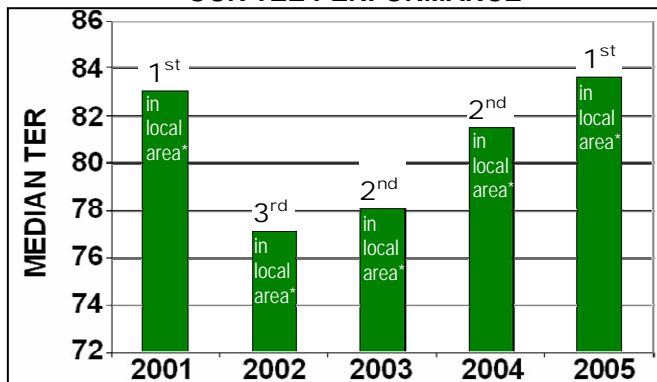
Lesmurdie SHS's WSA subjects performed well;

- 75% of our WSA subjects were above the state average with a higher rate of A grades awarded.
- 50% of our WSA subjects were listed in the best 10 classes for that subject statewide.
- In our local area\* Lesmurdie SHS was the school with the most number of WSA subjects listed in the best 10 classes statewide for their subject.

**Our TEE students'** final results are converted into TER scores. TER scores rank students. For example a TER of 80 means the student is in the top 20% of WA students. Schools compare their TEE results by looking at their median TER. The median is the middle student.

In 2005 our median TER was 83.6. This was very high as it meant half of our TEE students were in the top 16.7% of the state. So how did we compare to past years and how did we compare to other local schools?

### OUR TEE PERFORMANCE



This is a promising upward trend. For the fourth consecutive year our median TER has improved.

Our rank against local schools is also shown on the above graph. Lesmurdie has consistently been a top performing local school and in 2005 we were once again the best TEE school in our local area\* based on median TER.

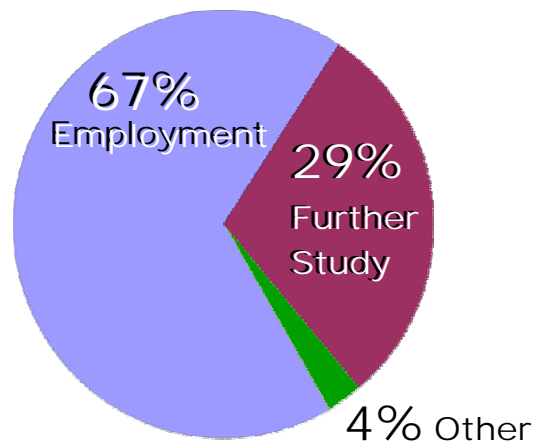
Other TEE student results were;

- 28% ranked in the top 10% of WA students
- 79% ranked in the top third of WA students
- 86% met University entry requirements
- 89% who applied for University were offered places

**Our VET students** or Vocational Education & Training students receive grades from school. They also work towards at least one Nationally recognised trade certificate from the training sector.

The success of our VET courses last year is evident from our destination surveys. The Department of Education and Training conduct a survey with all state school students to see where they are now.

### WHERE OUR 2005 VET STUDENTS WENT



\* Local area; we compared Lesmurdie SHS against all our local high schools, namely; Carmel Adventist, Forrestfield SHS, Lumen Christi, Kalamunda SHS, Kelmscott SHS, Mazenod, Thornlie SHS and St Brigids.

## STUDENT CARE

At Lesmurdie SHS we believe there is an ideal student population size to deliver the best for our students. In 2005 Lesmurdie SHS remained a medium sized school for that reason.

### Academic monitoring

In addition to teachers monitoring student performance, year coordinators also go through results looking for students who may not be coping or need extra assistance. The upper school coordinator also counsels students on their performances.

The effectiveness of our monitoring and counseling is evidenced by the exceptionally high results achieved by most students at the end of 2005.

### Year 8 - a smooth start



In 2005 the year 8's had most lessons in the one building. This gave them a 'home base' to settle into high school life. This building block also housed offices of the year 8 coordinator and other key support staff. A large common area in this building was used for year 8 assemblies, group work and also housed 30 computers.

### Student Services team

Many factors can affect a student's performance and motivation while at school. Student services is a team of staff selected specially for their ability to communicate and solve problems that students may be experiencing. Students were given assistance with their studies, health and self-worth on a needs basis.

Student services monitor individual and overall attendance rates which remained above the state average last year.

Student services became involved in a number of programs last year to improve the student experience. These were;

- Adult mentor programs
- Transition programs for year 7 to 8 and year 10 to 11
- Seasons for growth grief support
- Student council
- Student health committee
- CATE program a community program for retention
- Rural skills program
- Peer support and Peer mediation
- School ball committee
- Other social functions

The large number of activities have contributed to the communication and understanding of individuals.

## FACILITIES & DEVELOPMENTS

### Computer network



Improvements to our large computer network were the expansion of the year 8 area to 30 computers, upgrading of two specialist labs (multi-media & CAD) and setting up a mini lab for health / physical education. Our network features approximately 300 student computers of;

- 5 fully equipped computing laboratories, and
- Numerous mini-labs and computers in classrooms

### Gymnasium / sporting activities

Lesmurdie SHS has a gymnasium, oval, tennis and basketball courts. Each year we offer many sports and activities on and off site. In 2005 Lesmurdie ran school teams in cricket, football, baseball, cycling, hockey, triathlons, athletics, soccer, netball, basketball and swimming.

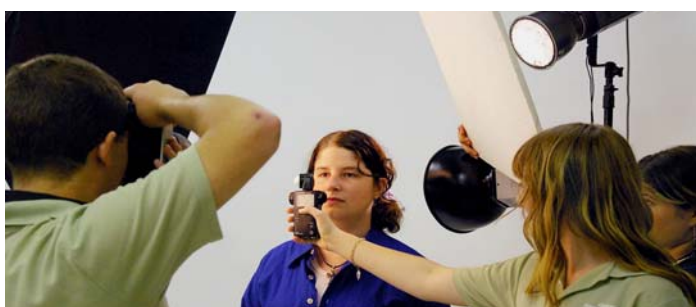
### Dance studio



The new Dance studio (completed 2004) was utilized most periods and after school for rehearsals. The enthusiasm of the people involved and the new dance studio contributed to our dance students taking out 2nd position in the televised Rock Eisteddfod competition.

### Photography lab

The photographic lab includes a photo shoot studio, darkroom, high end digital SLR cameras and an industrial quality printer.



## Visual Arts



Students were taught with traditional and contemporary tools. In 2005 Students created digital portfolios of

their art work. Visual art students created art work for real projects in the community or for the school such as;

- Drama sets for school productions
- Visual props and sets for Rock Eisteddfod
- Work exhibited at school and numerous public displays

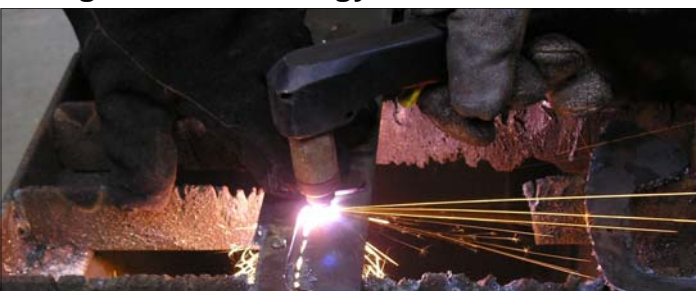
## Performing Arts Theatre



Our own Performing Arts Theatre has full lighting and sound equipment. In 2005 highlights were;

- Stage production, Kalamunda Performing Arts Centre
- A variety Solo Performance Night
- 4th in YOH Fest, a state Drama competition
- Performances to Primary schools and year 8's

## Design and Technology Centre



Courses offered in Design and Technology included Woodwork, Jewellery, Engineering, Metalwork, Mechanical Workshop, Furniture Woodwork and Technical Graphics. A hi-tech plasma cutter was purchased in 2005 (photographed). The programmable cutter uses high frequencies to cut solid steel.

## Special Science and Math Programme

Lesmurdie SHS continued to run the accredited Special Science and Math program. Students in the program were given an academic extension course with specialist teachers. This proved successful in preparing students for upper school. In 2005 all of the special science and math students finishing year 12 were eligible for university and 80% scored in the top 15% of the state.



## Music



Lessons were taught in classical guitar, contemporary guitar, percussion, trumpet, trombone, clarinet, flute, saxophone and voice for selected students. New digital recording was bought and there were end of year musical performances.

## Home Economics

Lesmurdie SHS has two fully equipped kitchens, textiles, clothing and early childhood studies areas. 2005 highlights were;

- Judged desert competition
- Guest chefs for cake decorating
- Running a regular playgroup
- Catering nights - three course meals for the public

## LOTE - Italian and Japanese



20 students and 2 staff visited Japan during their holidays. During the year, 4 students visited Italy for 2 months and our school hosted 4 exchange students from Italy.

In 2005 LOTE ran an advanced skills class which significantly prepared selected year 9&10 students for upper school courses.

## Vocational Education and Training



In 2005 we ran two programmes for students seeking employment or training after they leave school.

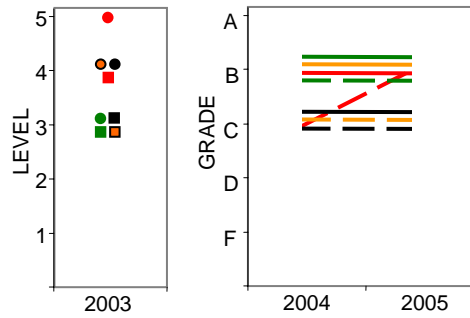
- General Vocation programme delivered Certificate II in Business at school and one day a week in a work place.
- Work Studies programme combined work experience and Tafe studies in an industry area of the students choice.

# MONITORING RESULTS

## Year 12's

Monitoring of student results is performed by teachers regularly checking the progress of their class. In addition sorting and checking of results is performed by other staff to identify students who need help. In year 12 both the year 12 co-ordinator and the upper school co-ordinator were involved in assisting many students with techniques to improve their marks.

### THE YEAR 12 GROUP - MEDIAN RESULT

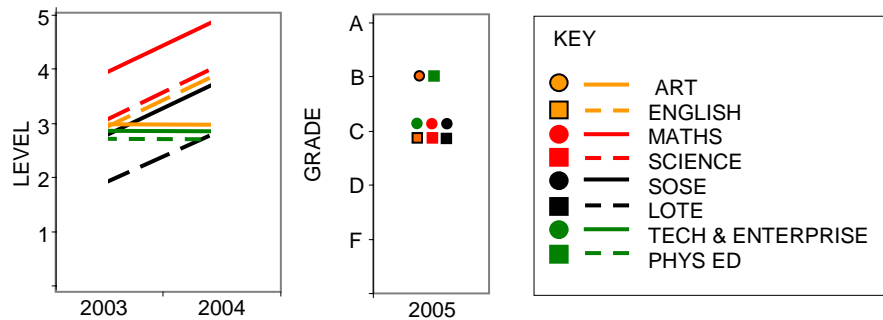


Year 12 Catering Night

## Year 11's

From 2003 to 2004 this group of students improved on their median results. In 2005 this group achieved either C or B median grades. In English and Phys Ed half of our year 11 students achieved a B grade or better in 2005. The staff at Lesmurdie SHS are committed to maintaining high expectations of all students.

### THE YEAR 11 GROUP

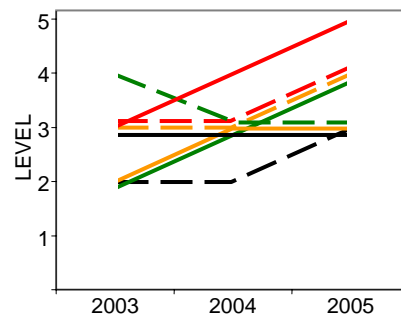


## Lower School Groups

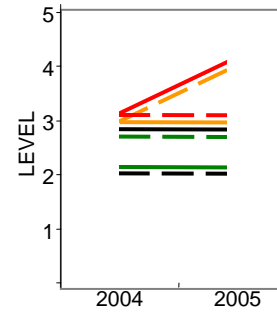
As you can see from the graphs to the right, with only one exception each year every subject area either remained the same level or improved.

Our year 9 students took part in a statewide test called MSE or Monitoring Standards in Education. The tests are designed so individual students and the school can compare themselves against state benchmarks. Below is shown the percentage of our year 9's who were above the state benchmarks.

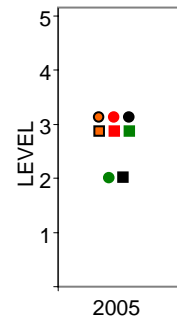
### THE YEAR 10 GROUP



### YEAR 9

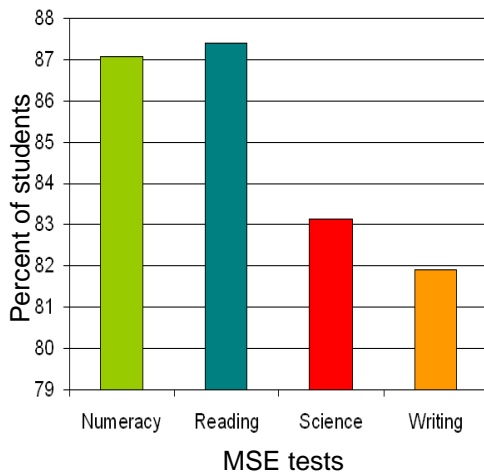


### YEAR 8



### MSE Results

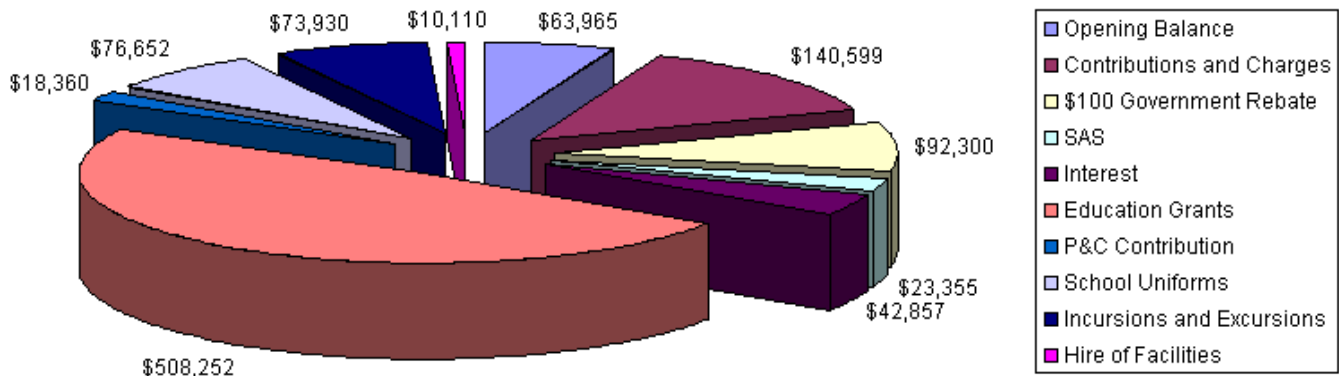
The Percent of our students significantly above the state benchmark



Languages in 2005 featured numerous cultural excursions (photo Year 8 Italian Excursion) and also in 2005 an excursion to Japan.

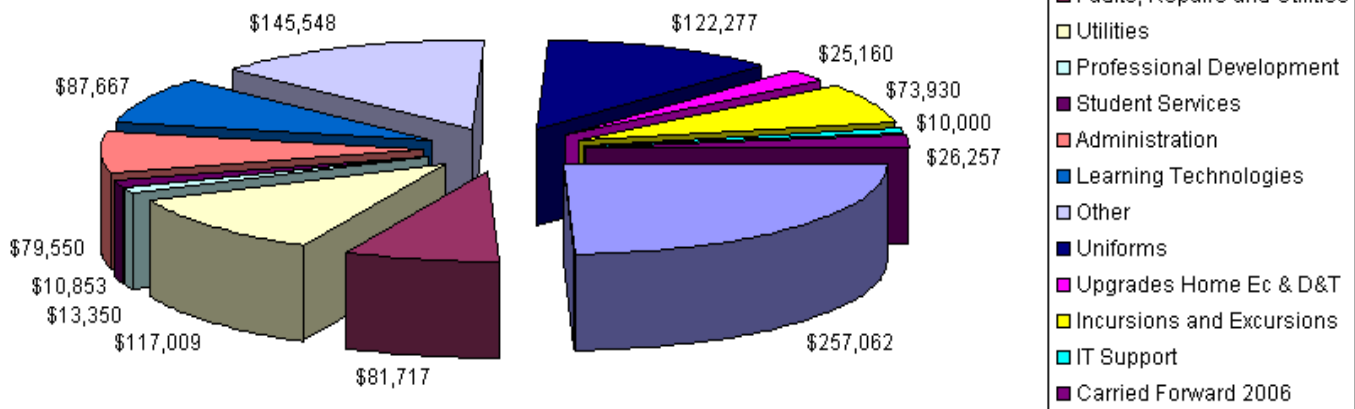
# FINANCES

## REVENUE 2005



Total \$1,050,380

## EXPENDITURE 2005



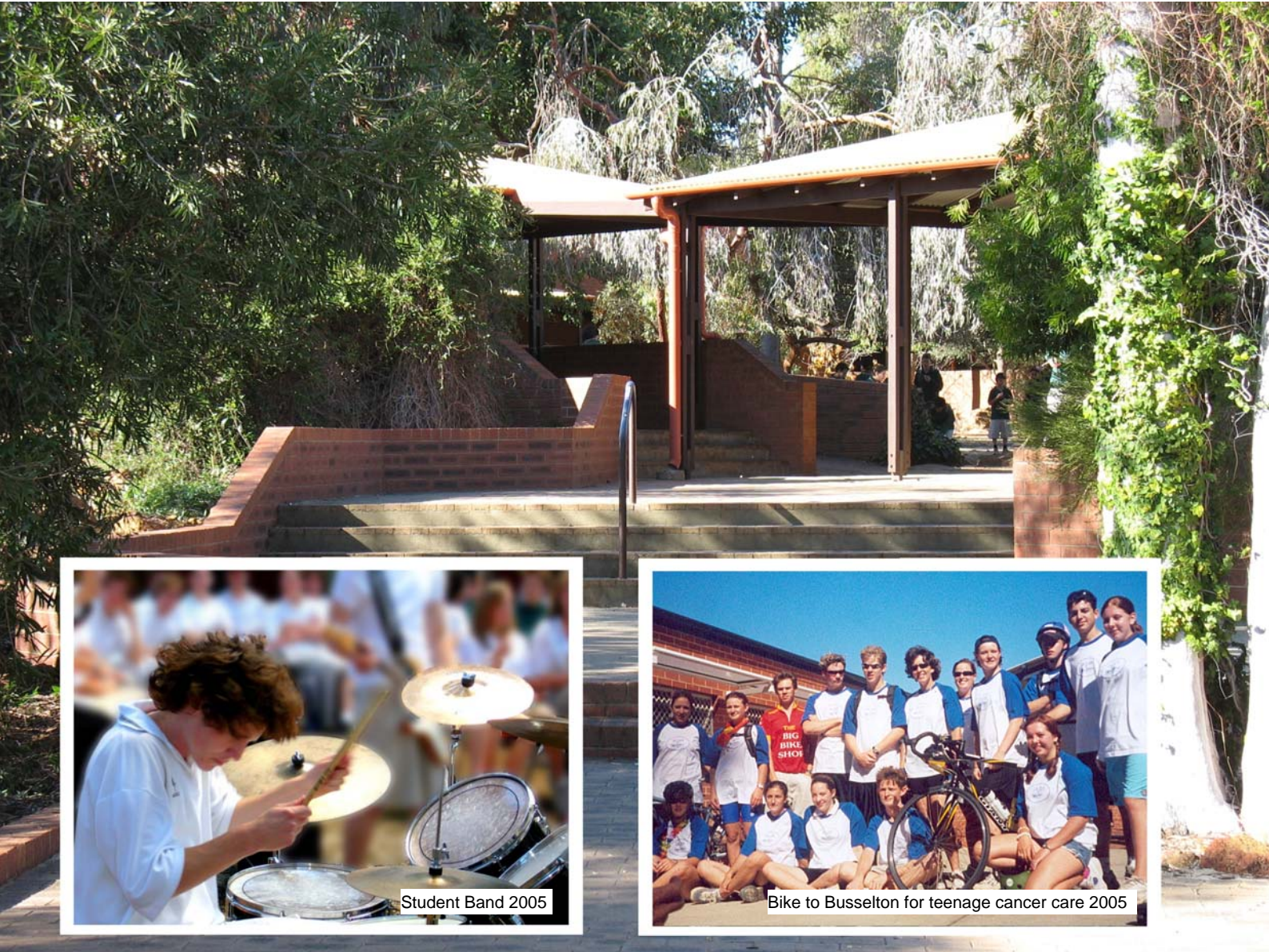
Total \$1,050,380



Where ever possible, we make our courses as real to life as possible. Part of the Early Childhood Studies class involves running a regular Playgroup.



Our Drama Production for 2005. Professional looking posters were produced using our photography department. The play was advertised publicly and performed at a public venue. All aspects of the play from promotion, making of sets, backstage crew and acting were handled by our students.



Student Band 2005



Bike to Busselton for teenage cancer care 2005

## LESMURDIE SENIOR HIGH SCHOOL

Reid Road  
Lesmurdie 6076  
Ph 9291 1200



Department of  
Education and Training

This Annual Review is on our website [www.lesmurdie.wa.edu.au](http://www.lesmurdie.wa.edu.au)