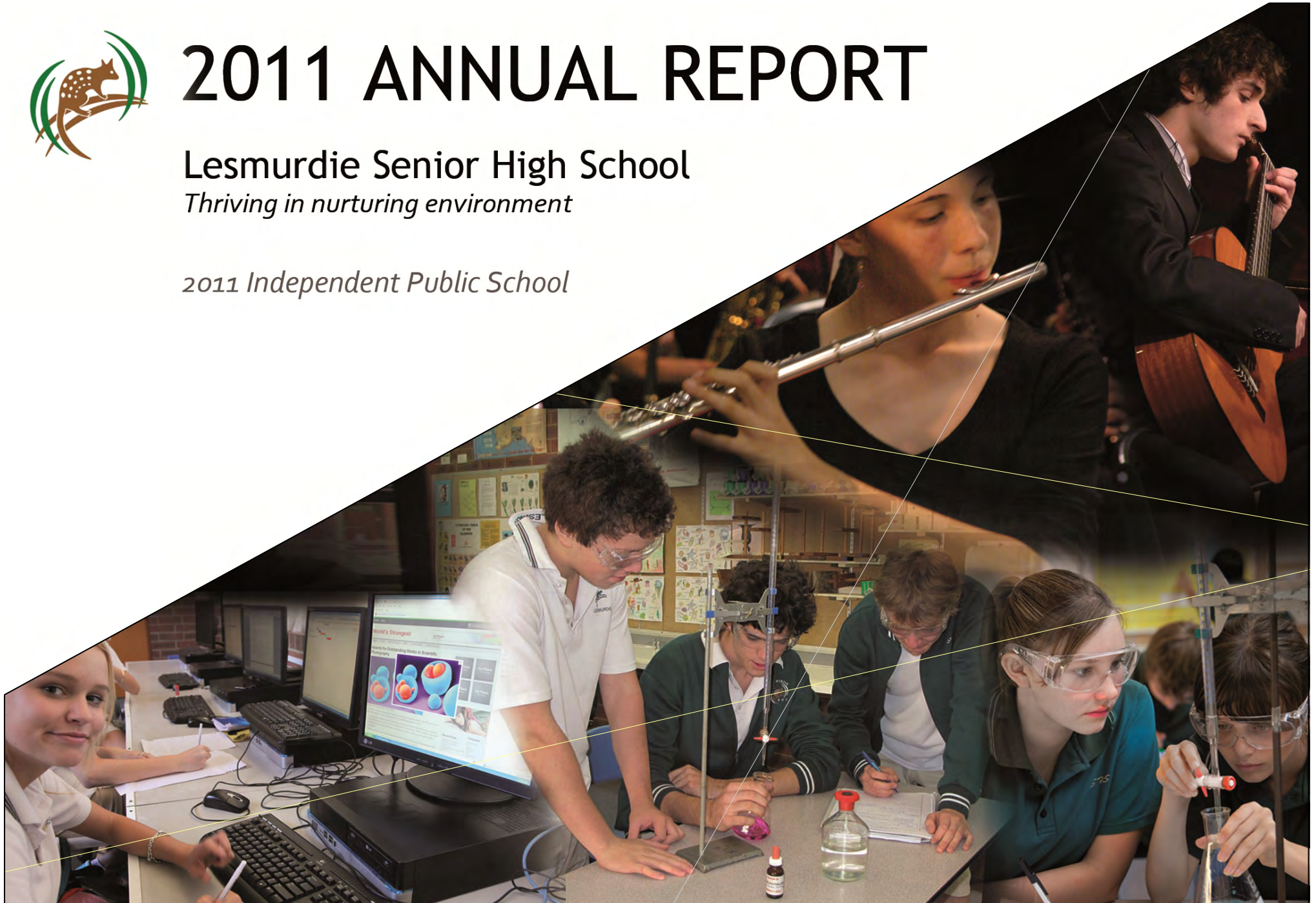




2011 ANNUAL REPORT

Lesmurdie Senior High School
Thriving in nurturing environment

2011 Independent Public School



Welcome

Lesmurdie Senior High School achieved a Top Public School Award in 2011 and continues to be a school of choice in the Hills area of Perth.

The acceptance of our application for Independent Public School [IPS] status in 2011 has been an affirmation not only of our excellent record of achievement but also the outstanding support we receive from our school community. With increased flexibility and governance over financial and workforce resourcing we will continue to work together to further enhance outcomes for our students.

Directly in line with our IPS Business Plan we are committed to providing the best possible opportunities for maximising the intellectual, creative, physical and social growth of every Lesmurdie student. We are proud of their achievements at local, state and national levels and acknowledge the role dedicated parents, carers and teachers play in their success.

Our attention to academic performance is of the highest priority.

Year 9 results in National testing in English and Mathematics [NAPLAN] and in Science and Society & Environment [WAMSE] were above both State and National benchmarks for most tests. 100% of our students completing University entrance courses [ATAR] received an offer of a place at a university.

Additionally Lesmurdie Senior High School was recognised in 2011 for achievements in Vocational Education and Training [VET] in senior school with an increase in the number of students completing TAFE Certificates.

Ongoing partnerships with Curtin University, industry representatives and businesses are highly valued.

Commitment from all members of our school community to our core value of respect is what makes our school a great school.

Our Teaching and Learning Team ensures that comprehensives processes and programs are in place to cater for individual learning, to identify and cater for students at risk and to ensure that as

many post-school opportunities as possible are available to our graduating students.

Our Student Services Team ensures a safe and caring learning environment, giving our young people access to a range of dedicated professionals who look after the well-being of all students.

This report documents many of our school's successes of 2011. These results are testament to the clear and productive partnerships that exist at Lesmurdie Senior High School between students, their parents and carers and our school staff.

John Stone
Principal



Our Beliefs about Teaching and Learning:

- Every student has the right to a **quality education**
- Each student is an **individual** who has a **preferred learning style**
- **Teachers are important role models** that help shape young peoples lives
- Learning should be an **enjoyable** and **challenging experience** that is **relevant, meaningful, interactive** and **engaging**
- Learning occurs best where **teachers are organised** and guide student-centered learning
- Learning occurs best in a **safe, stimulating and positive environment** that allows collaboration and fun, and engenders **respect for self and others**
- Teaching and Learning occurs in many **different settings** and is a **lifelong process**
- Positive teacher – student relationships are **founded on trust and respect** and underpin effective learning
- The staff at Lesmurdie Senior High School have collaborated and formed a consensus decision that we value and adhere to the following principles of teaching and learning in our day to day work.

Our Teaching and Learning must be:

- **Relevant and Meaningful**
The teaching and learning process is most effective when it is applicable to the real world and prepares individuals for life at and beyond school.
- **Respectful**
The teaching and learning environment is most effective when all stakeholders accept responsibility for their own actions and progress, and consequently are courteous, cooperative, and non-threatening in their relationships with others.
- **Engaging**
The teaching and learning process is most effective when all stakeholders interact and learn from one another. The technologies and instructional practices must be appropriate for the learners' level of prior knowledge, cognitive abilities, and their learning and thinking strategies
- **Organised and Safe**
The Teaching and learning environment is most effective when all stakeholders have developed and established a structured and trustful learning environment. The sharing of ideas and active participation in the learning process creates the learning community

Priorities

As an Independent Public School, the Business Plan for 2011-2013 has been developed to reflect our school's key strategic directions for the next three years.

Four key focus areas have been identified and these will form the basis of the accountability and performance indicators for our school.

- Learning: Achieving Academic Excellence
- Teaching: Excellence in Teaching
- Learning Environment: Safe, Supportive and Nurturing
- Facilities and Grounds: Highly Functional and Aesthetic

Core Value

A fundamental core value underpinning each of these focus areas is **RESPECT** and adherence to the principles of respect and an associated code of behaviour.

RESPECT for self, others, lifelong learning, environment and community is embodied in each of the four focus areas to ensure that all members of our school community – students and staff – have an opportunity to thrive.

Attendance

	Y08	Y09	Y10	Y11	Y12
2009	93%	92%	91%	92%	92%
2010	92%	92%	92%	92%	94%
2011	92%	89%	91%	92%	93%
State 2011	90%	87%	86%	86%	89%



Senior School Academic Achievement

Year 12 Participation

	Eligible Year 12 Students	Number acquiring an ATAR		VET – No of students in a Cert II or higher		VET – No of students completing a Cert II or higher	
		Number	Percentage	Number	Percentage	Number	Percentage
2009	142	88	62%	34	24%	9	6%
2010	146	102	70%	29	20%	15	10%
2011	139	83	60%	26	19%	13	9%

WACE Achievement

	Eligible Year 12 Students	Percentage achieving WACE
2009	142	96%
2010	146	98%
2011	139	99%

Note:

ATAR: Australian Tertiary Admissions Rank

VET: Vocational Education and Training

Year 12 students are those full time students eligible to graduate at the end of the year.

Information is only available for schools with 20 or more full time eligible students in Year 12 in the year.

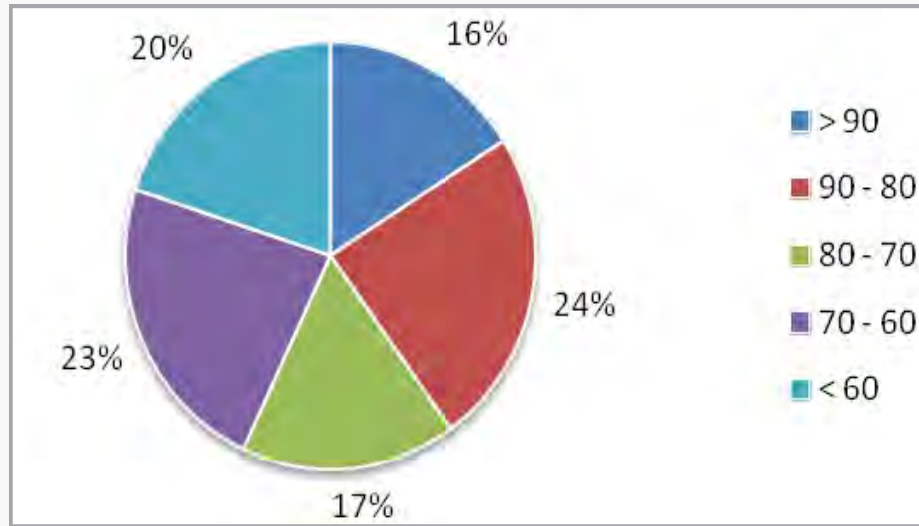
Percentage of Students Acquiring an ATAR Achieving One or More Scaled Scores of 75 or More

	Number acquiring an ATAR	Number achieving one or more scaled scores of 75+	Percentage achieving one or more scaled scores of 75+
2009	88	21	24%
2010	102	15	15%
2011	83	14	17%



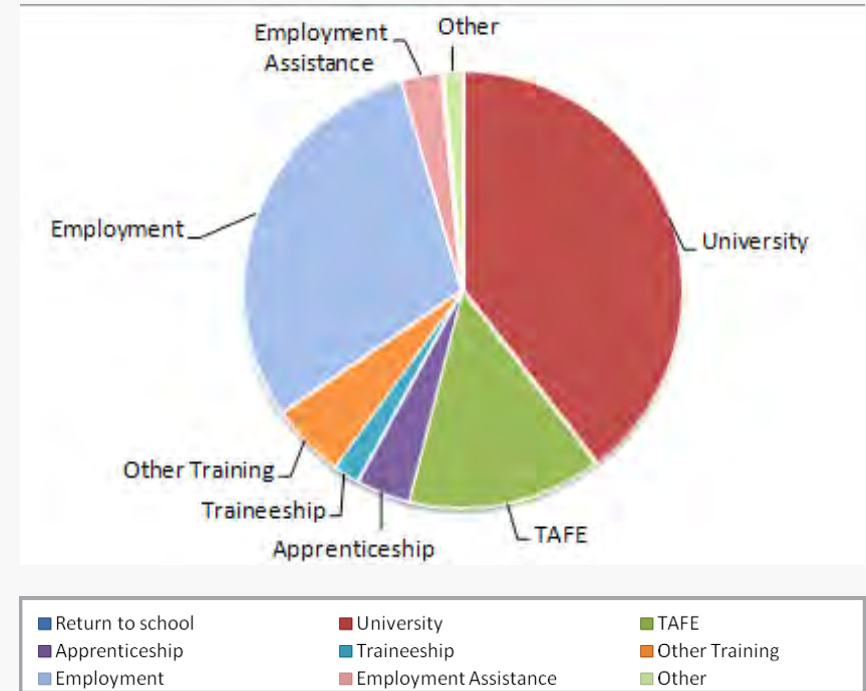
Senior School Academic Achievement

ATAR Distribution for 2011



- 57% of our WACE students achieved an ATAR of 70 or more, making them viable for most courses at WA universities
- 60% of our WACE students achieved Attainment of 55% or higher ATAR and a Certificate II or higher

Destination 2011

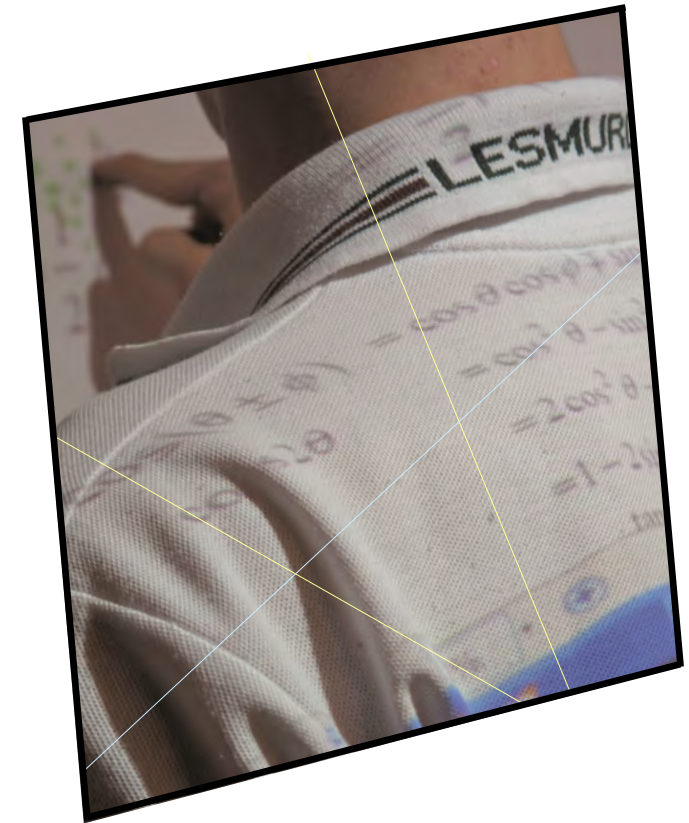


- The destination data here represents how successfully Lesmurdie Senior High School prepares students for post-school aspirations

Senior School Academic Achievement

School Performance—Stage 1 Courses—Grade Distribution

Course	School Percentages					State Percentages				
	A	B	C	D	E	A	B	C	D	E
Automotive Engineering and Technology	0	47	53	0	0	18	30	42	7	3
Applied Information Technology	21	21	16	32	11	20	27	40	7	6
Career and Enterprise	37	27	30	7	0	22	29	37	6	6
Design	16	5	42	26	11	21	28	36	9	6
English	18	26	51	5	0	15	32	45	5	4
Food Science and Technology	37	50	12	2	0	22	32	35	7	4
Integrated Science	26	26	26	22	0	19	31	38	7	5
Mathematics	22	37	33	5	4	20	26	36	10	7
Outdoor Education	11	17	50	22	0	28	34	30	5	3
Physical Education Studies	30	10	20	30	10	23	33	33	8	3
Visual Arts	10	17	62	7	3					



- In 2011, Lesmurdie Senior High School Stage 1 results were generally very pleasing with the overwhelming majority of our students achieving A or B grades. These results compare favourably against overall state results.

Year 9 NAPLAN Data

Band	Year 9 Reading								
	School			Like Schools			State		
	2009	2010	2011	2009	2010	2011	2009	2010	2011
10	2%	1%	3%	4%	2%	4%	3%	3%	5%
9	14%	14%	18%	16%	15%	13%	10%	12%	12%
8	34%	30%	28%	29%	25%	26%	23%	20%	21%
7	24%	32%	28%	28%	32%	30%	28%	25%	26%
6	15%	20%	18%	16%	18%	21%	21%	25%	23%
1 to 5	10%	4%	5%	7%	9%	7%	12%	14%	10%

Band	Year 9 Numeracy								
	School			Like Schools			State		
	2009	2010	2011	2009	2010	2011	2009	2010	2011
10	8%	4%	4%	5%	7%	7%	4%	6%	7%
9	16%	10%	18%	16%	12%	14%	11%	10%	12%
8	21%	28%	21%	28%	26%	22%	23%	22%	19%
7	31%	31%	24%	33%	30%	32%	31%	29%	28%
6	20%	21%	30%	15%	19%	20%	21%	22%	23%
1 to 5	4%	5%	2%	2%	6%	5%	7%	9%	8%

Band	Year 9 Writing								
	School			Like Schools			State		
	2009	2010	2011	2009	2010	2011	2009	2010	2011
10	7%	4%	2%	8%	6%	6%	5%	6%	7%
9	10%	14%	10%	12%	12%	11%	9%	10%	10%
8	22%	23%	21%	26%	27%	23%	19%	22%	19%
7	22%	23%	26%	22%	22%	22%	26%	20%	20%
6	24%	25%	17%	23%	22%	19%	22%	25%	18%
1 to 5	15%	12%	23%	10%	10%	18%	17%	16%	23%

Above National Minimum Standard
 At National Minimum Standard
 Below National Minimum Standard

- Excellent achievement to have 77% of Lesmurdie Senior High School achieve above the National Minimum Standard for Reading, 67% above for Numeracy and 59% above for Writing.
- 2011 was the first year of the Writing test being focused on persuasive writing and so strategic planning is in place for 2012 to build on students' skills in this area.

Year 9 WAMSE Data

In the State	Year 9 Science					
	School			Like Schools		
	2009	2010	2011	2009	2010	2011
Top 20%	31%	22%	36%	23%	20%	22%
Middle 60%	57%	64%	43%	65%	63%	63%
Bottom 20%	12%	14%	21%	12%	17%	15%

In the State	Year 9 Society and Environment					
	School			Like Schools		
	2009	2010	2011	2009	2010	2011
Top 20%	22%	15%	22%	25%	19%	23%
Middle 60%	69%	69%	62%	62%	65%	62%
Bottom 20%	9%	16%	16%	13%	15%	14%

- In 2011, in both Science and Society & Environment, 70% of Lesmurdie Senior High School students achieved at or above the WAMSE test standard.
- The 39% of our students in the Top 20% in the State for Science is clear evidence of our LEAP Specialist Program.



Learning Area Highlights

The Arts

- Concert Band and Guitar Ensemble chosen to perform at the Big Boys' Breakfast
- YOHFEST participation – Dance and Drama groups
- Arts Spectacular @ Kalamunda Performing Arts Centre
- ATAR Visual Arts and Drama above state-wide performance
- ATAR Dance results significantly higher than 2010

English

- Louise Vickers Top 10 Spellers in West Australian Newspaper Spelling Competition
- ATAR English significantly above state-wide standards

Heath & Physical Education

- Brandon Bennier and Arianah Isaia competed in the Australian Open Water Swim, Sydney
- Qld Rafting Trip
- Second place in the ACC Boys Senior Basketball Competition
- Third place in B Division Interschool Swimming
- Ross Glendinning SE Zone Champions in Senior School Boys AFL Competition
- Louise Vickers competed in the Australian Figure Skating Championships
- Successful Annual School Fun Run
- ATAR Outdoor Education above state-wide performance
- ATAR Physical Education Studies results higher than 2010

Languages

- Tour to Italy
- European Languages Hub – one of only two in Perth
- ATAR Italian significantly above state-wide performance

Mathematics

- ATAR Mathematics Specialist above state-wide performance



Science

- NZ tour
- Petroleum Club of WA Competition – 4th place: Trip to Karratha for the team
- Lucy Barton represented us @ the Youth Science Forum @ UWA
- ATAR Biological Sciences and Human Biological Sciences significantly above state-wide performance
- ATAR Chemistry results significantly higher than 2010

LEAP

- Participation in the Da Vinci Decathlon @ Wesley College
- Engineering in School Project @ Curtin University
- Leap Expo

Society & Environment

- ATAR Modern History results significantly higher than 2010

Technology & Enterprise

- ATAR Accounting & Finance significantly above state-wide performance
- ATAR Applied Information Technology results significantly higher than 2010
- Design project of outdoor play area for Pickering Brook Pre-primary School
- Designed Falls Road Primary School website
- Year 11 Children, Family & the Community students made packages for homeless families
- Year 8 Home Economics Food Expo

- Year 10 Special Occasions Catering class competed in a Masterchef type contest
- Stage 1 & 2 Children, Family & the Community students ran a community playgroup for 8 weeks in term 3

General

- Participation in the Fogarty Foundation Youth Leadership Program
- Curtin Link and Curtin Coaches Program – partnerships with Curtin University
- Launch of the School Volunteers Program
- Pickering Book Primary School Building Bridges Program



Providing Opportunities



To Grow...

To Create...



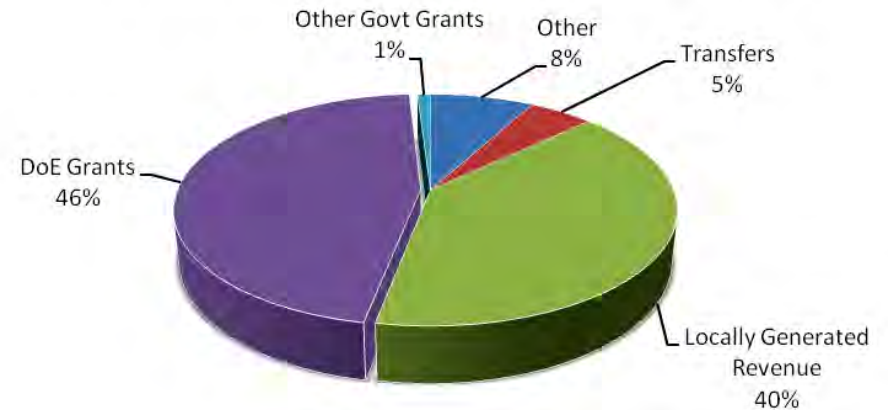


To Learn.

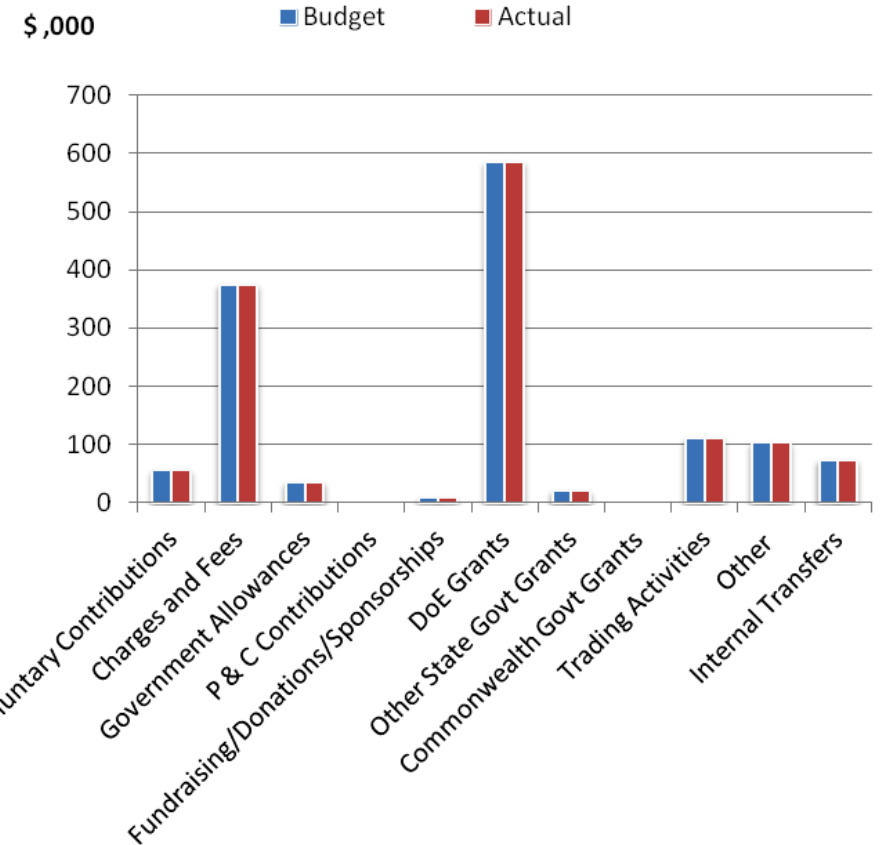
Finances – Revenue

Revenue - Cash	Budget	Actual
Voluntary Contributions	\$ 56,048.25	\$ 56,048.25
Charges and Fees	\$ 375,819.42	\$ 375,649.37
Government Allowances	\$ 35,444.00	\$ 35,444.00
P&C Contributions	\$ -	\$ -
Fundraising/Donations/ Sponsorships	\$ 8,530.36	\$ 8,606.36
DoE Grants	\$ 586,650.24	\$ 586,650.24
Other State Govt Grants	\$ 20,526.43	\$ 20,526.43
Commonwealth Govt Grants	\$ -	\$ -
Trading Activities	\$ 111,417.70	\$ 111,512.70
Other	\$ 103,898.01	\$ 103,918.78
Internal Transfers	\$ 73,987.88	\$ 73,987.88
Total	\$ 1,372,322.29	\$ 1,372,344.01
Opening Balance	\$ 447,970.01	\$ 447,970.01
Total Funds Available	\$ 1,820,292.30	\$ 1,820,314.02

Current Year Actual Revenue Sources



Revenue - Budget vs Actuals



Finances – Expenditure

Expenditure	Budget	Actual
Administration	\$ 119,463.88	\$ 116,093.00
Leases	\$ -	\$ -
Utilities	\$ 186,818.96	\$ 185,532.19
Repairs/Maintenance/Grounds	\$ 125,028.04	\$ 121,138.16
Capital Works	\$ 386.36	\$ 386.36
Assets and Resources	\$ 114,235.64	\$ 112,842.08
Education Services	\$ 322,530.12	\$ 297,965.05
Other Specific Programs	\$ 374,171.04	\$ 336,951.95
Trading Activities	\$ 115,290.17	\$ 114,020.17
Salary Pool Payments to Central Office	\$ 55,000.00	\$ 55,000.00
Other	\$ 114,529.35	\$ 72,518.91
Transfers to Reserves	\$ 217,660.47	\$ 217,660.47
Total	\$ 1,745,114.03	\$ 1,630,108.34

